



alaknanda

By Hero Realty Pvt. Ltd.

YOUR JOY, YOUR CALM

THOUGHTFULLY PLOTTED DEVELOPMENT
at Haridwar



A Community Beyond Compare

Experience a living space that blends serenity, community, and luxury. A place where every detail is carefully designed for your peace of mind. A sanctuary built to last, with the soul of Haridwar at its heart.



Your Peaceful Retreat

Find your escape in Haridwar. Whether you seek solace for your soul, a second home to unwind, or a weekend retreat, Alaknanda offers the perfect blend of tranquility and connection. Here your heart finds peace in a city of devotion.



Well Connected. Wonderfully Serene.

Alaknanda is where convenience meets calm. Well connected to key highways and yet tucked away in a serene location, Alaknanda offers you the best of both worlds. It's where you can feel the pulse of life without the noise.

EDUCATIONAL INSTITUTIONS

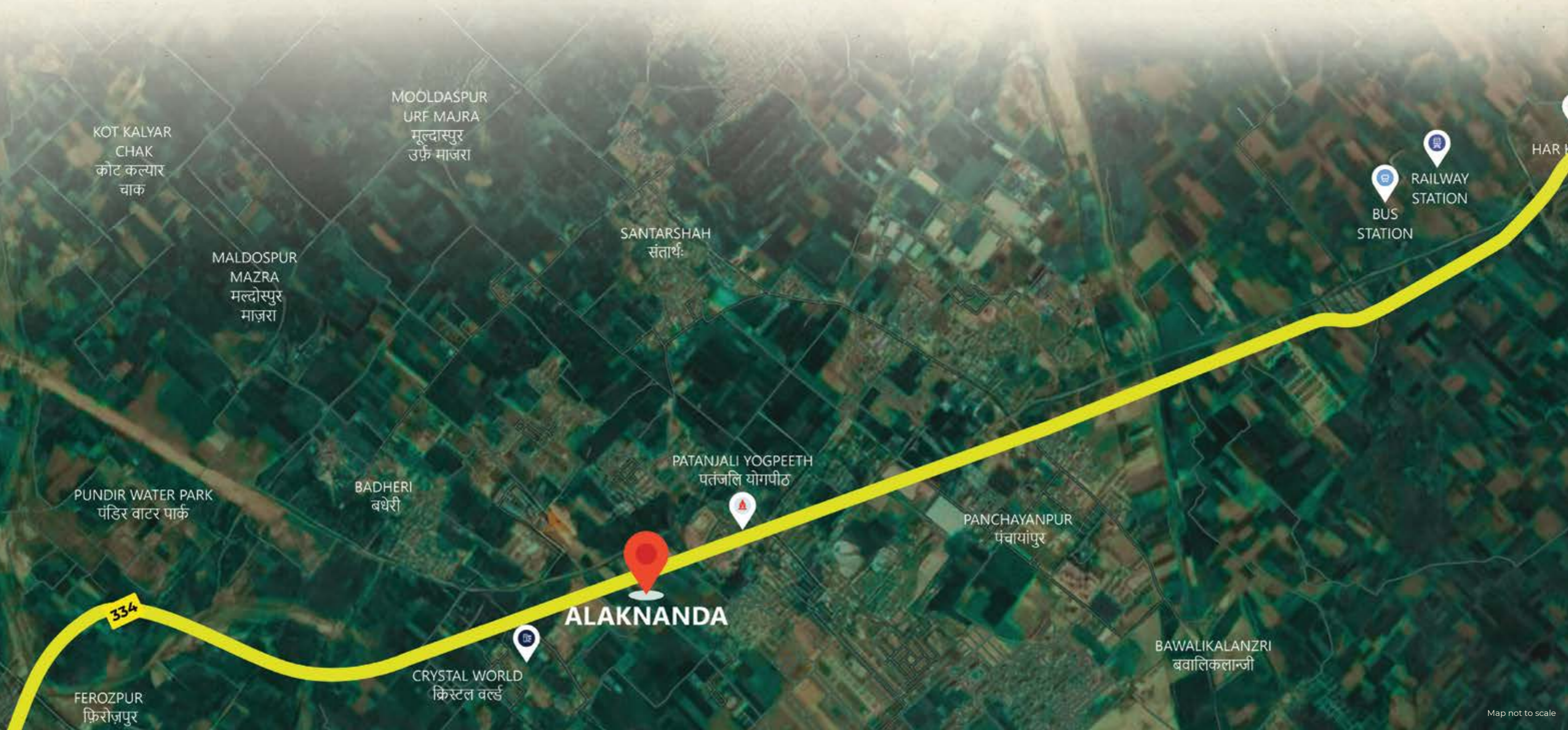
BML MUNIAL GREEN MEADOW SCHOOL	: 01 kms
G.D. GOENKA PUBLIC SCHOOL	: 02 kms
COER UNIVERSITY	: 04 kms
IIT ROORKEE	: 12 kms

HOSPITALS

PATANJALI AYURVEDIC HOSPITAL	: 01 kms
QUADRA HOSPITAL	: 4.4 kms
SWAMI BHUMANAND HOSPITAL	: 11 kms
JAYA MAXWELL HOSPITAL	: 12 kms

TEMPLES

CHANDI DEVI	: 21 kms
MANSA DEVI	: 22 kms
HAR KI PAURI	: 22 kms
SHANTI KUNJ	: 25 kms



Spiritually Rooted

At Alaknanda, you get more than just home, you are connected to the sacred. It's the gateway to the Char Dham and revered temples. Here you are in the heart of spiritual peace, where every step is guided by the spirit of devotion.



GANGOTRI



YAMUNOTRI



BADRINATH



KEDARNATH



Club Alaknanda

Step into Club Alaknanda. A world of wellness, leisure and community. Where your mind finds peace, your body finds strength and your family thrives in a space designed for all. Here, relaxation and activity come together in perfect harmony.

MINI BASKETBALL COURT



MULTIPURPOSE HALL



KIDS' PLAY AREA



BADMINTON COURT

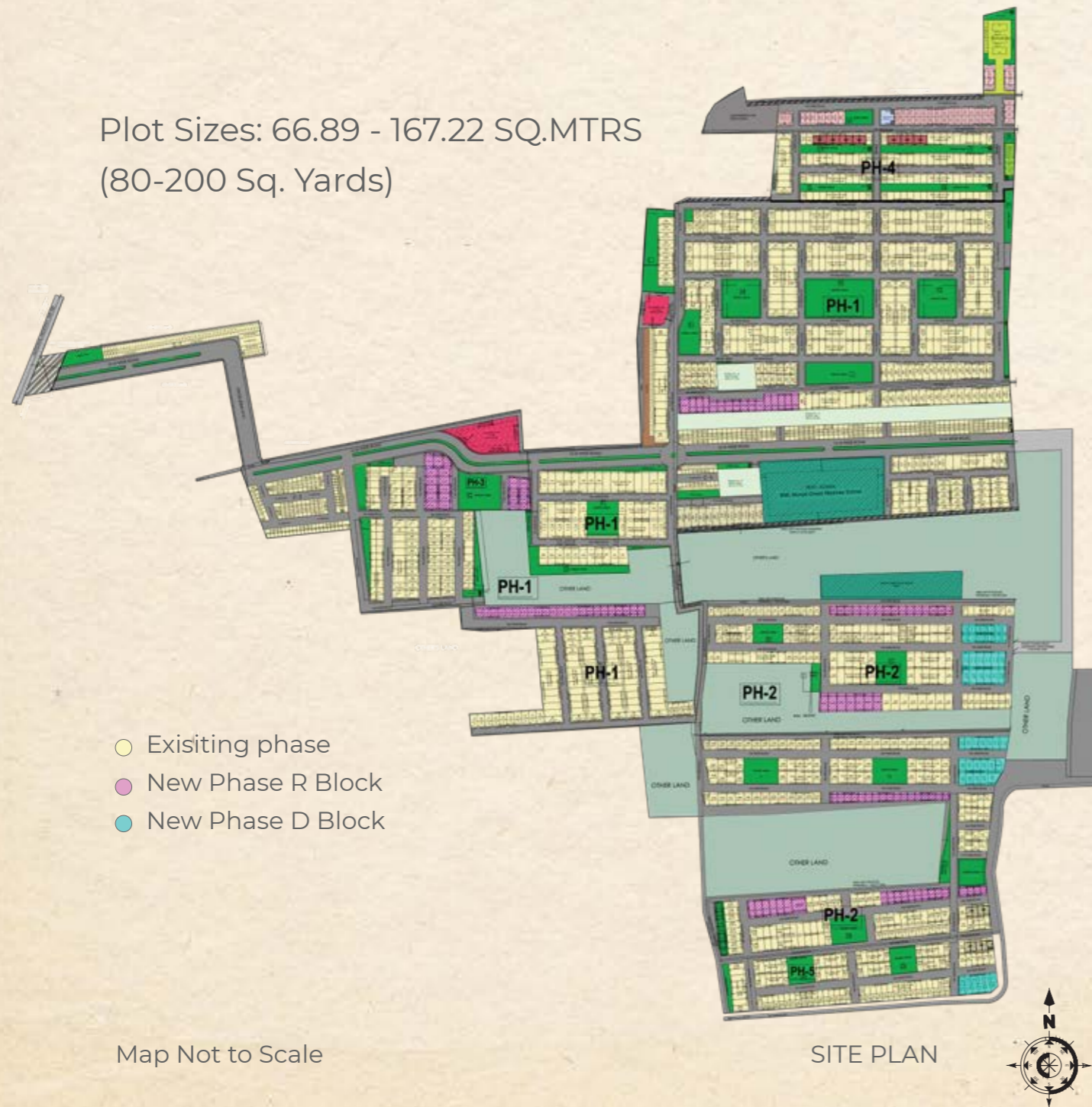


FULLY EQUIPPED GYMNASIUM

Where Your Dreams Take Shape

Here, each plot is designed to maximise serenity and space, ensuring you live in harmony with your surroundings. Our site plan is created with thoughtful consideration for green spaces, easy accessibility, and a community-focused environment.

Plot Sizes: 66.89 - 167.22 SQ.MTRS
(80-200 Sq. Yards)



Haridwar's Finest Investment Destination

Alaknanda is not just a home, it's a legacy. With impressive value growth and substantial appreciation, investing in Haridwar's finest destination means securing a prosperous future. The value continues to grow, making this an opportunity you won't want to miss.

400% Appreciation

5X Value Growth in 13 Years



Why Haridwar?

- Emerging as a Top Tier-2 investment destination with exceptional opportunities
- Rising demand for second homes and tranquil retirement living among urban professionals
- Growing interest from Delhi-NCR buyers seeking spiritual sanctuaries and weekend retreats
- Haridwar offers cost-competitive residential land compared to UP and NCR, attracting buyers from all over
- Government focus on modernising infrastructure in Tier II and III temple towns, as reported by ***The Economic Times***.

Why Invest Now In Alaknanda By Hero Realty?

- **Early Mover Advantage**
Seize the opportunity to invest in an emerging growth corridor before prices adjust with full infrastructure development.
- **Competitive Pricing**
Get exceptional value and maximise your investment potential with pricing that delivers strong returns.
- **Trusted Brand**
Invest with confidence, backed by Hero Realty's proven track record of high-quality construction and timely project delivery.
- **Emotional Value**
More than just property - invest in spiritual wellness and a fulfilling life near the sacred Ganges.
- **Best AQI**
Breathe easy in Haridwar's pristine air and serene environment, offering a healthier, elevated lifestyle for you and your family.





20+ YEARS OF EXPERTISE

7,000+

HAPPY HOMES

8 Mn+

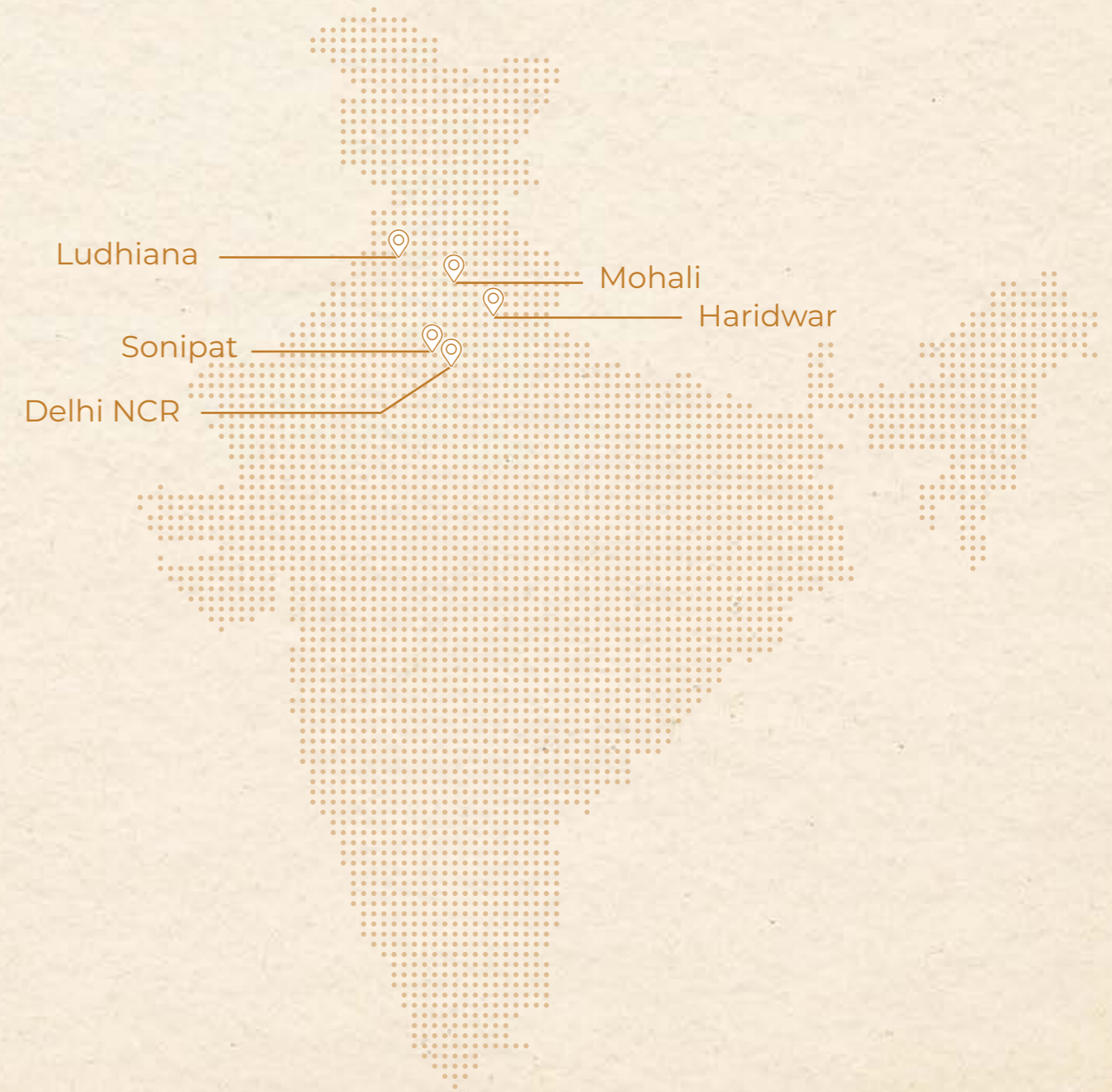
SQ. FT. DELIVERED

6 Mn+

SQ. FT. IN DEVELOPMENT



OUR FOOTPRINTS





REGISTERED & CORPORATE OFFICE:

264, Ground Floor, Okhla Industrial Estate, Phase- III, New Delhi-110020.

Tel: +91 11 47467000 | Fax: +91 11 47467070

SITE OFFICE

Alaknanda Plots - Haridwar NH-334,
Adjacent to Patanjali Yogpeeth, Haridwar

Alaknanda (the "Project") is being developed by Hero Realty Pvt. Ltd. ("Developer"). The Project is registered before the Uttarakhand RERA authority under the RERA Act vide registration no. UKREP 03210000218, UKREP 03210000219, UKREP 02200000330, UKREP 10190000312 and UKREP 10190000313. All views are artistic impressions and are subject to change at the sole discretion of the Developer. The Developer urges every Applicant to inspect the project site and, therefore, requests to make personal judgment prior to applying for booking. Unless otherwise stated, all images, visuals, materials, and information contained herein are purely creative/artistic and may not be actual representations of the product or any amenities. Further, the actual design may vary in fit and finish from what is displayed above. This advertisement is purely conceptual, illustrative, and intended for indicative purposes only and does not constitute a legal offering. Nothing contained herein shall be construed as an invitation for an offer, an offer, acceptance, provisional or final allotment, nor shall it form part of any legally binding agreement/contract or commitment of any nature by the Developer. All digital/printed materials, representations, plans, specifications, artistic renderings, images (other than actual images), areas, sizes, shapes and positions and whatever facilities, amenities, recreational areas as shown are merely artistic impressions. No warranty is expressly or implied that the completed development will comply in any degree with these artistic impressions/digital materials, renderings, representations, or images as depicted herein. Viewers/Recipients are advised to exercise their discretion when relying on the information described/shown herein and should, after thorough understanding of the Project and after taking appropriate advice, take further decision regarding/in relation to the Project.